





AUTOFLOWERING SEEDS: 1 - 16

FEMINIZED SEEDS: 17 - 44

EXPRESS SEEDS: 45 - 60

KALASHNIKOV SEEDS IS A GROUP OF OLD SCHOOL GROWERS, SOVIET ARMY VETERANS, BREEDING CANNABIS SEEDS IN RUSSIA FOR MORE THAN A DECADE. WE BASED IN KUBAN REGION, CLOSE TO SOCHI, AND WORK IN CONSTANT COOPERATION WITH PARTNERS IN SAINT PETERSBURG AND IN THE FAR EAST REGION CLOSE TO CHINA. ALL OF OUR STRAINS ARE THE RESULT OF CROSS-BREEDING AK-47 (SERIOUS SEEDS) CLONES WITH RUSSIAN, DUTCH, SPANISH, EASTERN EUROPEAN AND AFGHAN LANDRACES.

WE HAVE BEEN BREEDING CANNABIS SINCE 2002 WITH FIRST SALES IN 2013. WITHIN SHORT TIME KALASHNIKOV SEEDS BECAME A TOP BRAND ON THE POST-SOVIET UNION CANNABIS MARKET, ACTIVELY COMPETING WITH MANY WESTERN SEED BANKS ON THEIR OWN TERRITORY. IN EUROPE, WE ARE AVAILABLE IN SEVEN COUNTRIES AND LOOKING FOR MORE.

APART FROM AUTOFLOWERING AND FEMINIZED SEEDS, AFTER YEARS OF EXPERIMENTS, WE HAVE ACHIEVED A LINE OF "EXPRESS" STRAINS. THEY ARE CHARACTERIZED BY SHORTER PERIOD OF FLOWERING THAN THEIR FEMINIZED COUNTERPARTS. ATTENTION! EXPRESS ARE NOT AUTOFLOWERING. PLEASE DO NOT EXPECT LOWERING IN JUNE! EXPRESS NEED SHORTER DAY TO GET FLOWERS, EXACTLY AS FEMINIZED PLANT.

CENTRAL STAGE ON CANNABIS SCENE IS OCCUPIED BY DUTCH AND SPANISH BREEDERS AND OUR INTENTION IS TO PROVE THAT RUSSIAN-GROWN SEEDS NOT IN ANY WAY WORSE THAN THE FOREIGN ONES. AND MOREOVER, FRANKLY SPEAKING, THEY ARE, AT TIMES, EVEN BETTER. TO MAKE ARE WORDS COUNT WE PARTICIPATE IN A NUMBER OF CANNABIS EXPOSITIONS, GRADUALLY GAINING MORE AND MORE POPULARITY BEYOND THE RUSSIAN BORDER.



A

AK SKUNK AUTO

THIS AUTOFLOWERING VARIETY WAS CREATED
(BASED ON OUR ORIGINAL AK-47 STRAIN.

IDEAL FOR FAST COMMERCIAL GROWING,
AS WELL AS GUERRILLA GARDENING.

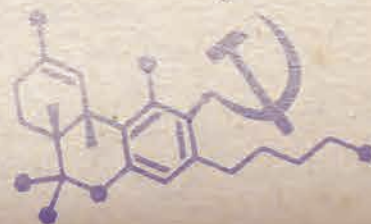
MEDIUM SIZED PLANTS WITH DENSE BUDS,
PERFECT FOR OUTSIDE AUTO-GROWING.

EFFECT IS DISTINCTIVE SATIVA,
ENERGIZING AND STIMULATING.

BEST FOR CREATIVE
WORK AND SOCIALIZING.

TASTE IS SWEET AND
CITRUS WITH TOUCH OF LIME.

★ 1 ★



AK-SKUNK X RUDEHALIS

RUDEHALIS 10%, SATIVA 50%, INDICA 40%

THC: 18% / HEIGHT: 50-70 CM / FLOWERING: 55-60 DAYS

INDOOR: 250-350 GR/M² / OUTDOOR: 50-70 GR/PLANT



AMUR GIANT AUTO

THIS IS A TALL AUTO-FLOWERING SATIVA DOMINANT VARIETY.
RESULT OF CROSSING JACK HERER X POWERPLANT WITH
RUDERALIS OF THE AMUR REGION.

AMUR GIANT AUTO - IS A POWERFUL, 100%
AUTO-FLOWERING STRAIN. HAS SOME VISUAL RESEMBLANCE
WITH POWER PLANT. ITS UNUSUAL SMELL REMINDS OF JACK
HERER, BUT A BIT MORE LEMON-BERRY.

CULTIVATED AMUR RUDERALIS PLAYED AN IMPORTANT
ROLE IN THE STABILITY AND VIABILITY OF THIS PLANT
(RESISTANCE TO FUNGAL DISEASES AND TILTING).

AT THE END OF FLOWERING, ITS LARGE, DENSE,
BRIGHT BUDS TURN

YELLOW-ORANGE, COVERED
WITH A THICK LAYER OF RESIN.

THE TASTE OF LEMON
SANDALWOOD, WITH A TOUCH OF
WILD BERRIES JAM.

IT HAS A POWERFUL SATIVA EFFECT. IDEAL
FOR WORK AND COMMUNICATION.



AMUR RUDEHALIS X JACK HERER X POWER PLANT

RUDEHALIS 10%, SATIVA 60%, INDICA 30%

THC: 19% / HEIGHT: 100-150 CM / FLOWERING: 68-75 DAYS

INDOOR: 450-600 G/M² / OUTDOOR: 60-300 G/PLANT



BABUSHKA BLACK AUTO

BLACK DIAMOND OF OUR COLLECTION, THE FIRST EVER CROSSING OF CRIMEA AND PAKISTAN IN THE HISTORY OF BREEDING. BABUSHKA BLACK AUTO INHERITES VIVID COLOR, SATURATED WITH DARK VIOLET TONES AND EXQUISITE RESINITY, WHICH ALLOWS TO OBTAIN HIGH-QUALITY CONCENTRATES. THE INFLUENCE OF PAKISTANI INDICA GENES GIVES THE EFFECT OF COMPLETE RELAXATION OF BODY AND MIND AND ACTIVELY STIMULATES SLEEP WHEN NECESSARY. THE VARIETY HAS A DIVERSE BOUQUET OF AROMAS: FROM A MORE EARTHY HASHISH TO SWEET NOTES OF FRUITS AND BERRIES. WHEN USED IT TASTES LIKE CHERRY JAM WITH STRONG BLACK TEA. THAT'S WHY THE VARIETY RECEIVED SUCH A "WARM" AND "HOME-LIKE" NAME - GRANDMA (BABUSHKA), (BECAUSE WHO ELSE IF NOT HER WILL CALM YOU DOWN, FEED YOU SOMETHING TASTY AND WARM YOU UP ON A COLD DAY?)

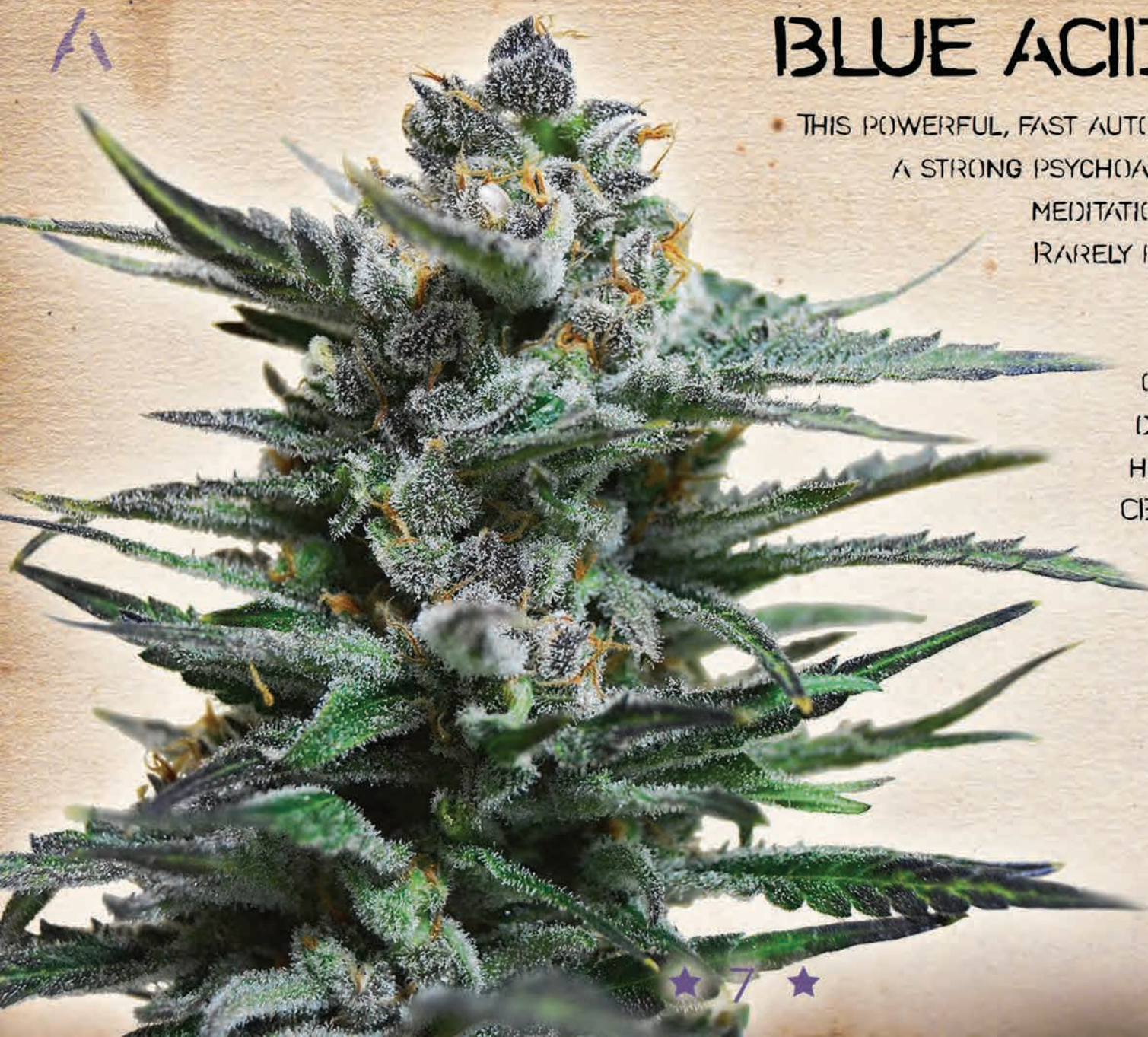
CRIMEA RUDEHALIS X PAKISTAN

RUDEHALIS 10%, SATIVA 10%, INDICA 80%

THC: 19% / HEIGHT: 50-80 CM / FLOWERING: 55-60 DAYS

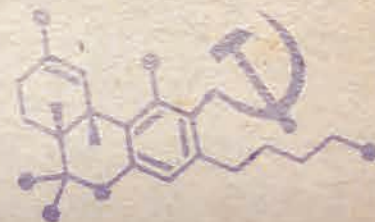
INDOOR: 300-450 G/M² / (OUTDOOR: 35-110 G/PLANT





BLUE ACID AUTO

- THIS POWERFUL, FAST AUTOFLOWERING STRAIN HAS A STRONG PSYCHOACTIVE EFFECT. IDEAL FOR MEDITATION AND CONTEMPLATION. RARELY REACHES MORE THAN 70 CM, WHICH HELPS TO CAMOUFLAGE IT AT THE OPEN SPACES. TIGHT AND DENSE FLOWERS CONTAIN HIGH LEVELS OF THC AND CBD. GOOD FOR SOOTHING CHRONIC PAINS. HAS A SWEET HARSH TASTE WITH HINTS OF STRAWBERRY JAM.



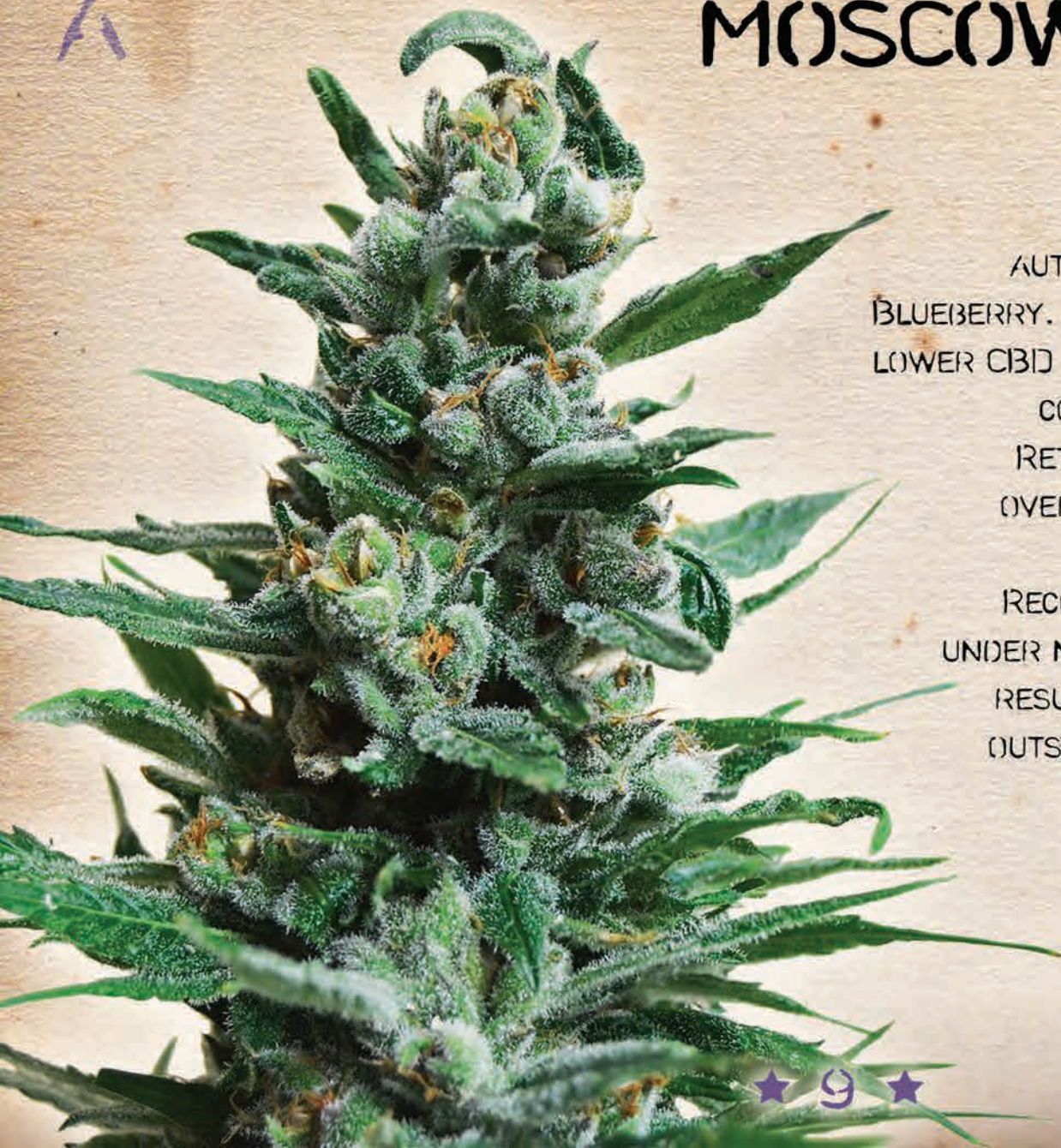
AK-47 x STRAWBERRY x RUDEERALIS

RUDEERALIS 10%, SATIVA 20%, INDICA 70%

THC: 17% / HEIGHT: 60-70 CM / FLOWERING: 55-60 DAYS

INDOOR: 200-400 G/M² / OUTDOOR: 35-120 G/PLANT





MOSCOW BLUEBERRY AUTO

MOSCOW BLUEBERRY AUTO IS AN AUTOFLOWERING VERSION OF OUR MOSCOW BLUEBERRY. DIFFERS FROM ITS "ELDER" (BROTHER) BY LOWER CBD LEVELS (DUE TO) RECESSIVE GENES. ALSO CONTAINS HIGHER PERCENTAGE OF INDICA. RETAINS SWEET WILD BERRIES SMELL, SOFT OVERWHELMING CHERRY AROMA WITH HINTS OF CITRUS. RECOMMENDED FOR BEGINNERS, SINCE EVEN UNDER MINIMAL CARE HIGH ABOVE THE AVERAGE RESULT IS GUARANTEED. COMPACT BUDS AND OUTSTANDING CROPS ARE THE MAIN MOSCOW BLUEBERRY CHARACTERISTICS.

MOSCOW BLUEBERRY X RUDEHALIS

RUDEHALIS 10%, SATIVA 20%, INDICA 70%

THC: 18% / HEIGHT: 60-90 CM / FLOWERING: 60-65 DAYS

INDOOR: 250-400 G/M² / OUTDOOR: 35-100 G/PLANT



NORTHERN RUSSIAN AUTO

THIS HYBRID IS A RESULT OF CROSSING NORTHERN LIGHTS, WHITE RUSSIAN AND RUSSIAN RUDEBALIS. COMBINES BLACK COMPACT NORTHERN LIGHTS BUDS AND SNOWY WHITE WHITE RUSSIAN CRYSTALS.

RUDEBALIS GENETICS GIVES IT A SWEET, EUCALYPTUS CITRUS SMELL. EASY TO GROW, RESISTANT TO EXCESS OF HUMIDITY AND FUNGI DISEASES. IDEAL FOR BOTH EXPERIENCED AND BEGINNER GROWERS. THE EFFECT IS SOOTHING AND POSITIVE. GOOD FOR STEADY CREATIVE WORK.



NORTHERN LIGHTS X WHITE RUSSIAN X RUDEERALIS

RUDEERALIS 10%, SATIVA 20%, INDICA 70%

THC: 19% / HEIGHT: 60-80 CM / FLOWERING: 55-60 DAYS

INDOOR: 220-500 G/M² / OUTDOOR: 30-90 G/PLANT



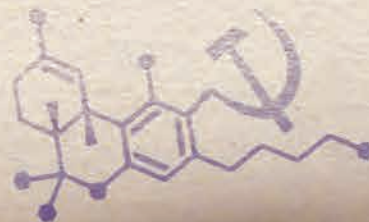
PURPLE MAZAR AUTO

PLANT IS USUALLY UP TO 60 - 70 CM IN HEIGHT, FORMING A
LARGE PURPLE- VIOLET CENTRAL COLA SURROUNDED BY
BRIGHT GREEN LEAVES. BECAUSE OF THIS AMAZING COLOR
CONTRAST, PURPLE MAZAR AUTO IS HARD TO CONFUSE
WITH ANY OTHER VARIETY.

CAMOUFLAGE PURPLE COLOR ALLOWS THE PLANT TO
BLEND IN AMONG THE FLOWER(BED), WITHOUT ATTRACTING
UNNECESSARY ATTENTION. DUE TO ITS SMALL SIZE AND
THE COLOR PALETTE, THIS AUTO-FLOWERING STRAIN IS
IDEAL FOR GROWING OUTDOOR.

AFTER DRYING, (BUDS TURN ALMOST BLACK AND HAVE A
VERY UNUSUAL SMELL: PINE FRAGRANCE WITH NOTES
OF WILD BERRIES.

A STRONG RELAXING EFFECT MAKES THIS VARIETY
IDEAL FOR MEDICINAL USE.



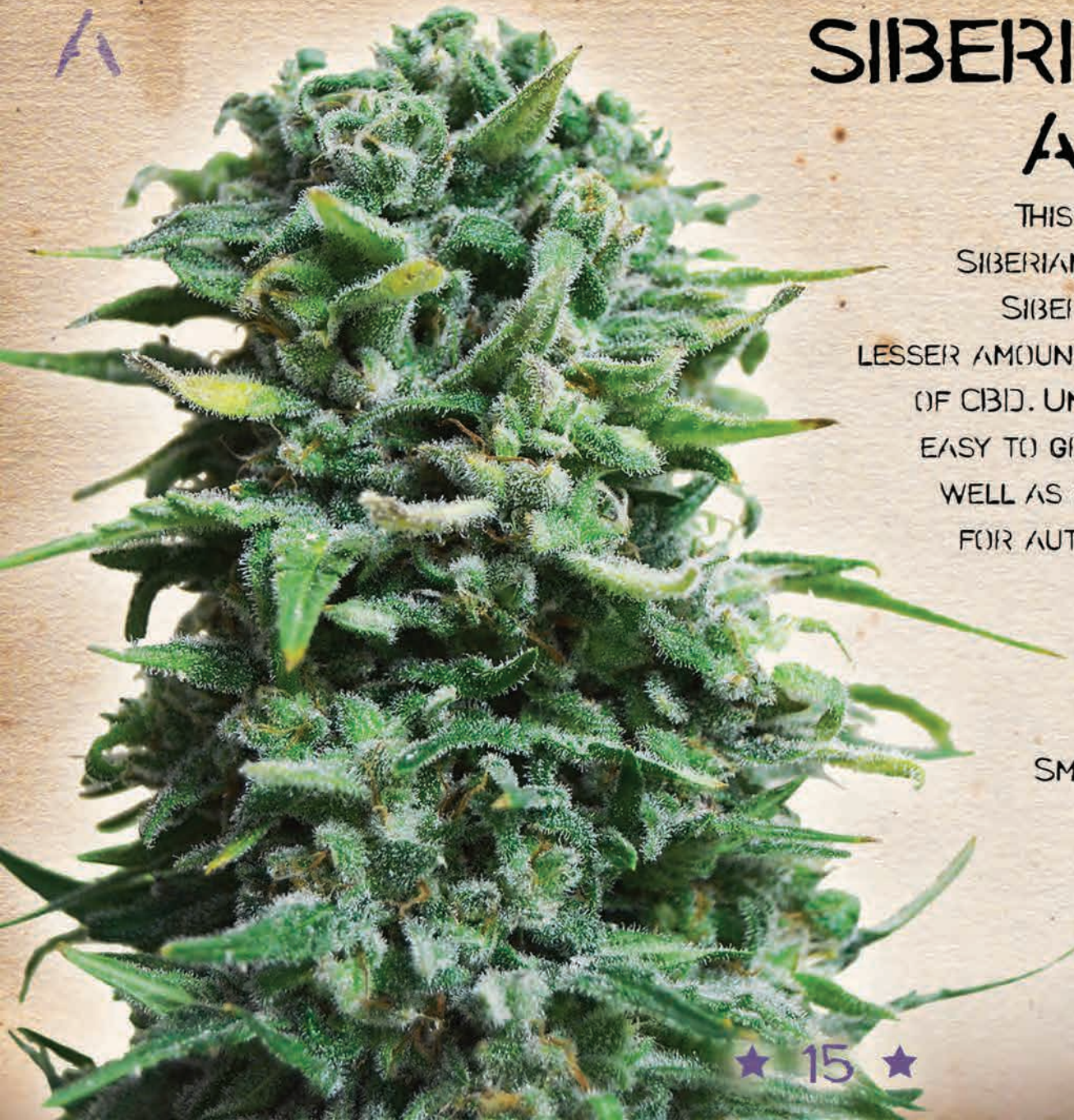
PURPLE X MAZAR X RUDEERALIS

RUDEERALIS 10%, SATIVA 5%, INDICA 85%

THC: 18% / CBD 1,4% / HEIGHT: 60-80 CM / FLOW.: 55-60 DAYS

INDOOR: 350-450 G/M² / OUTDOOR: 35-130 G/PLANT





SIBERIAN HAZE AUTO

THIS IS AN AUTOFLOWERING VERSION OF SIBERIAN HAZE. ALL THE MAIN QUALITIES OF SIBERIAN HAZE ARE RETAINED, BUT WITH LESSER AMOUNTS OF SATIVA AND BIGGER CONTAINS OF CBD. UNLIKE ITS PHOTOPERIOD BROTHER, IS EASY TO GROW, IDEAL BOTH FOR BEGINNER, AS WELL AS EXPERIENCED GROWERS. QUITE TALL FOR AUTOFLOWER PLANTS WITH THICK STEM AND ELONGATED RESINOUS BUDS. EFFECT IS POWERFUL, CEREIBRAL AT START, SLOWLY SHIFTING INTO MEDICINAL AND RELAXING. SMELL IS TYPICAL HAZE WITH HINTS OF LIME.

★ 15 ★

Handwritten signature in purple ink, possibly reading 'K. Fish'.

SIBERIAN HAZE X RUSSIAN RUDEHALIS

RUDEHALIS 10%, SATIVA 50%, INDICA 40%

THC: 18% / CBD 3% / HEIGHT: 80-100 CM / FLOW.: 45-55 DAYS

INDOOR: 250-350 G/M² / OUTDOOR: 50-80 G/PLANT



F

AK KUSH

THIS IS ONE OF THE BEST STRAINS AMONG KALASHNIKOV SEEDS INDICAS. IT WAS CREATED BY CROSSING CRIMEAN INDICA WITH AFGHAN KUSH, KNOWN FOR ITS THERAPEUTIC QUALITIES, COMPACT BUDS COVERED BY GIANT THC CRYSTALS, WITH THE HARD-TO-KILL AK-47. ABSOLUTELY UNDEMANDING, RESISTANT TO MOLD AND FUNGAL DISEASES, DOESN'T REQUIRE MANICURING AND QUITE SUITABLE FOR BEGINNERS.

THIS VARIETY, UNLIKE OTHER KUSHES, WONDERFULLY FITS FOR THE EASTERN EUROPEAN CLIMATE, AS WELL AS OTHER NORTHERN CLIMATES, AND EXCEPTIONALLY SHOWS ITSELF OUTDOORS, BRINGING THE HARVEST UP TO 1400 GRAMS PER PLANT OR UP TO 600 GRAMS PER SQUARE FEET IF GROWN INDOORS.

THE EFFECT IS VERY CEREBRAL AND NARCOTIC. CAN BE USED FOR TREATING INSOMNIA AND CHRONIC PAIN. MINTY, SWEET PLANT'S AROMA TRANSFORMS INTO EUCALYPTUS AND CITRUS WHILE BURNING.

CRIMEAN INDICA X AFGHAN KUSH X AK-47

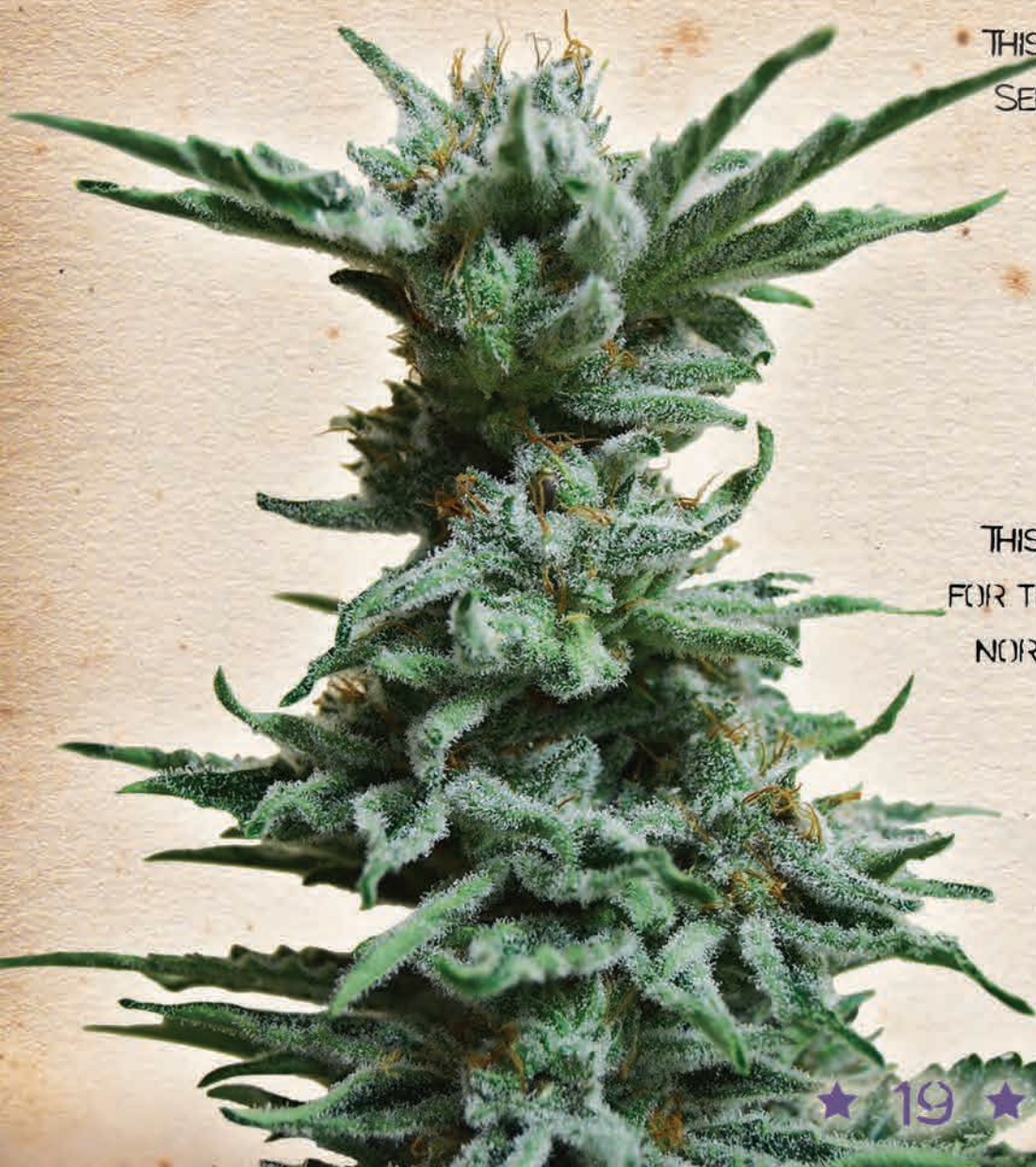
SATIVA 15%, INDICA 85%

THC: 20% / HEIGHT: 80-100 CM / FLOWERING: 50-60 DAYS

INDOOR: 450-550 G/M² / OUTDOOR: 800-1400 G/PLANT



AK SKUNK



THIS IS ONE OF THE BEST STRAINS AMONG KALASHNIKOV SEEDS INDICAS. IT WAS CREATED BY CROSSING CRIMEAN INDICA WITH AFGHAN KUSH, KNOWN FOR ITS THERAPEUTIC QUALITIES, COMPACT BUDS COVERED BY GIANT THC CRYSTALS, WITH THE HARD-TO-KILL AK-47. ABSOLUTELY UNDEMANDING, RESISTANT TO MOLD AND FUNGAL DISEASES, DOESN'T REQUIRE MANICURING AND QUITE SUITABLE FOR BEGINNERS.

THIS VARIETY, UNLIKE OTHER KUSHES, WONDERFULLY FITS FOR THE EASTERN EUROPEAN CLIMATE, AS WELL AS OTHER NORTHERN CLIMATES, AND EXCEPTIONALLY SHOWS ITSELF OUTDOORS, BRINGING THE HARVEST UP TO 1400 GRAMS PER PLANT OR UP TO 600 GRAMS PER SQUARE FEET IF GROWN INDOORS.

THE EFFECT IS VERY CEREBRAL AND NARCOTIC.

CAN BE USED FOR TREATING INSOMNIA AND CHRONIC PAIN. MINTY, SWEET PLANT'S AROMA TRANSFORMS INTO EUCALYPTUS AND CITRUS WHILE BURNING.

AK-47 X SKUNK #1

SATIVA 50%, INDICA 50%

THC: 21% / HEIGHT: 80-100 CM / FLOWERING: 60-65 DAYS

INDOOR: 400-500 G/M² / OUTDOOR: 800-1400 G/PLANT



F

AMNESIA MOLOTOV

THIS IS A NEW AND THE MOST LETHAL STRAIN FROM KALASHNIKOV SEEDS. CROSSING THREE MIGHTY VARIETIES (AMNESIA, CHEM DAWG AND THE KUBAN KILLER), WE RECEIVED TRULY EXPLOSIVE MIXTURE. THIS UNDEMANDING PLANT IS RESISTANT TO FUNGAL DISEASES. EASY TO CARRY SAME AS EXCESS OR THE LACK OF MOISTURE. IT DOES NOT NEED SPECIAL CARE, THEREFORE SUITABLE FOR BOTH BEGINNERS AND PROFESSIONALS. DUE TO THE HIGH THC LEVEL IS PERFECT FOR MAKING WAX (B.H.O.). UNIQUE, UNFAMILIAR, SPICY-CITRUS SCENT. WHEN SMOKING, RETAINS THE PRIMARY FLAVOR, (BUT WITH A HINT OF INCENSE AND GINGER. POWERFUL PSYCHEDELIC SATIVA EFFECT IS IDEAL FOR SOCIALIZING AND RECREATION USE.



AMNESIA X CHEM DAWG X KUBANSKIY UBIYZA
SATIVA 60%, INDICA 40%



THC: 24% / HEIGHT: 100-130 CM / FLOWERING: 63-65 DAYS
INDOOR: 500-600 G/M² / OUTDOOR: 900-1700 G/PLANT



BOY SCOUT COOKIES

SPEAKING BOXER'S LANGUAGE, BOYS SCOUT COOKIES IS A DOUBLE
HOOK, A DOUBLE HIT FROM THE RIGHT AND LEFT. TWO
LEGENDARY VARIETIES COMBINED WITH AN INCREASED THC
CONTENT AND A POWERFUL INDICA EFFECT. UNDEMANDING AND
EASY IN GROWING AND GROOMING, THIS GENEROUSLY CROPPING STRAIN
AVAILABLE FOR CULTIVATION EVEN FOR PEOPLE WITH TWO LEFT HANDS
ONLY. COMPACT SILVERY WHITE BUDS ARE COVERED WITH FROSTY
TRICHOMES UP TO THE LAST DAY OF FLOWERING. PURE
CEREBRAL HIGH WITH PROLONGED EFFECT. THE TASTE OF
CONDENSED MILK AND CHOCOLATE BISCUITS WHILE SMOKING.
BOY SCOUT COOKIES IS A PERFECT SEDATIVE, IT FIGHTS
INSOMNIA AND IMPROVES APPETITE.

Handwritten signature: X/ESH

KUBANSKIY UBIYZA X GIRL SCOUT COOKIES

SATIVA 30%, INDICA 70%

THC: 25% / HEIGHT: 90-120 CM / FLOWERING: 60-65 DAYS

INDOOR: 500-600 G/M² / OUTDOOR: 900-1500 G/PLANT



KALASHNIKOV ORIGINAL

THIS STRAIN IS THE RESULT OF CROSSING AK-47 WITH ALTAI SATIVA. VERY POWERFUL STABILIZED GENETICS, WITH HIGH RESISTANCE TO FUNGAL DISEASES. KALASHNIKOV ORIGINAL IS A RELIABLE STRAIN WITH SHORT FLOWERING PERIOD AS FOR SATIVA. EASY TO GROW. PERFORMS WELL OUT IN THE COLD, HEAT, WIND AND UNDER THE RAIN, NOT REQUIRING THOROUGH CARE OR SPECIFIC EXPERIENCE. AND, MOREOVER, DELIVERS 500 TO 600 GRAMS OF WONDERFUL, DENSELY COVERED WITH RESIN BUDS.

KALASHNIKOV ORIGINAL IS A TRUE "COMRADE" OF A GUERRILLA FARMER AND A LOYAL FRIEND TO AN INDOOR GROWER. HIGHLY DISTINCTIVE SATIVA EFFECT AND POWERFUL FLOWER SCENT WITH HINTS OF STRAWBERRIES AND HINDU INCENSE. ALL IN ALL IT'S A CANNABIS CLASSIC, ANOTHER VERSION OF ALL-TIME POPULAR AK-47.



ALTAI SATIVA X AK-47

SATIVA 60%, INDICA 40%

THC: 19% / HEIGHT: 90-120 CM / FLOWERING: 55-65 DAYS

INDOOR: 500-600 G/M² / OUTDOOR: 750-1500 G/PLANT



F

KATYUSHA

SWEET UNION OF THE AFGHAN "HASHISH QUEEN" HINDU KUSH AND OUR ALL-TIME FAVORITE KUBANSKIY UBIYZA LED TO THE CREATION OF A MAGNIFICENT "KATYUSHA". DARK GREEN CONES IN THE RADIANCE OF SCATTERED DIAMOND TRICHOMES. ONE OF THE MOST POWERFUL RESIN PRODUCERS INHERITED ITS LOUD ARTILLERY NAME FOR GOOD REASON - KATYUSHA HITS YOU HARD FROM THE FIRST PUFF, PLUNGING ENTIRELY INTO THE SWEET ENVELOPING DEPTHS OF EUPHORIA. THE DELICATE SWEET AROMA OF SANDALWOOD WITH EARTHY NOTES AND DENSE, RICH FLAVOR WILL BE REMEMBERED FOR A LONG TIME. KATYUSHA HELPS TO FIND A DEEP SENSE OF CALM, EASE THE PAIN, NAUSEA AND OTHER MENTAL DISORDERS.

NOTE: "KATYUSHA" IS THE RUSSIAN ROCKET LAUNCHER, RENOWNED DURING THE BATTLES OF THE SECOND WORLD WAR



Handwritten signature: A. Est

HINDU KUSH X KUBANSKIY UBIYZA

SATIVA 20%, INDICA 80%

THC: 23% / HEIGHT: 110-150 CM / FLOWERING: 55-60 DAYS

INDOOR: 500-600 G/M² / OUTDOOR: 900-1600 G/PLANT



KUIBAN KILLER AKA KUIBANSKIY UBIYZA

DESPITE ITS GRIM AND CREEPY NAME KUIBAN KILLER IS A VERY POSITIVE STRAIN, RESULT OF CROSSING NORTHERN LIGHTS, AK-47 AND QUITE INTERESTING SATIVA-DOMINANT HYBRID FROM THE SUNNY KUIBAN REGION ON THE SOUTH OF RUSSIA.

ABSOLUTELY UNDEMANDING, RESISTANT TO HIGH HUMIDITY LEVELS AS WELL AS DRY AND HOT SUMMER WEATHER. PLANTS ARE PRETTY TALL, REACHING UP TO 2-3 METERS OUTDOORS AND HIGHLY PRODUCTIVE IN ANY CLIMATE.

BIG ELONGATED BUDS DENSELY COVERED WITH THICK LAYERS OF RESIN WITH HIGH LEVELS OF THC. "KILLERS" GROW FAST FOR SATIVA-DOMINANT PLANTS, ONLY 55 DAYS RESULTING IN 600 GRAMS PER SQM INDOORS.

IDEAL FOR B.H.O.(WAX).

EFFECTS WHILE SMOKING DRY PRODUCT ARE TOTALLY HAMMERING, AS PROPOSED BY ITS NAME, VERY PHYSICAL AND RELAXING. TASTE IS LEMONY, SOUR WITH HINTS OF TROPICAL FRUITS.

KUBAN SATIVA X NORTHERN LIGHTS X AK-47

SATIVA 60%, INDICA 40%

THC: 22% / HEIGHT: 100-130 CM / FLOWERING: 55-60 DAYS

INDOOR: 500-600 G/M² / OUTDOOR: 900-1500 G/PLANT

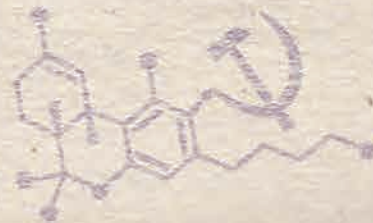


★ 30 ★

F

LAVANIDA CREAM

LAVANIDA CREAM IS A GOLDEN CARTRIDGE IN OUR BANDOLIER. WE ARE REALLY PROUD OF THE LONG AND PAINSTAKING WORK DONE DURING THE CREATION OF THIS MAGNIFICENT INDICA. STABLY FRUITFUL AND FRAGRANT LAVANIDA CREAM OWES ITS CHARACTERISTICS TO THE STRONGEST VETERAN VARIETY, THE "SOLOIST" OF THE CRIMEAN CANNABIS-BREEDING. LAVANIDA CREAM HAS A STRONG PSYCHEDELIC EFFECT AND A RICH AROMA OF CRIMEAN LAVENDER. A BEAUTIFUL, DENSE AND RESINOUS PLANT WITH TATAR ROOTS. WHEN USED, THE TASTE OF LAVENDER IS COMPLEMENTED BY CREAMY SHADES OF WHIPPED CREAM. POWERFUL SEDATIVE EFFECT. PROVEN ANTIDEPRESSANT.



VETERAN (CRIMEA STRAIN) X SECRET HYBRID

SATIVA 20%, INDICA 80%

THC: 22% / HEIGHT: 100-130 CM / FLOWERING: 60-65 DAYS

INDOOR: 500-600 G/M² / OUTDOOR: 800-1200 G/PLANT



F

MOSCOW BLUEBERRY

THIS HYBRID TRULY DESERVES TO BE CALLED MEDICINAL STRAIN DUE TO ITS HIGH CONTENTS OF CBD. THIS WAS ACHIEVED BY CROSSING BLUEBERRY, AK-47 AND SECRET HYBRID.

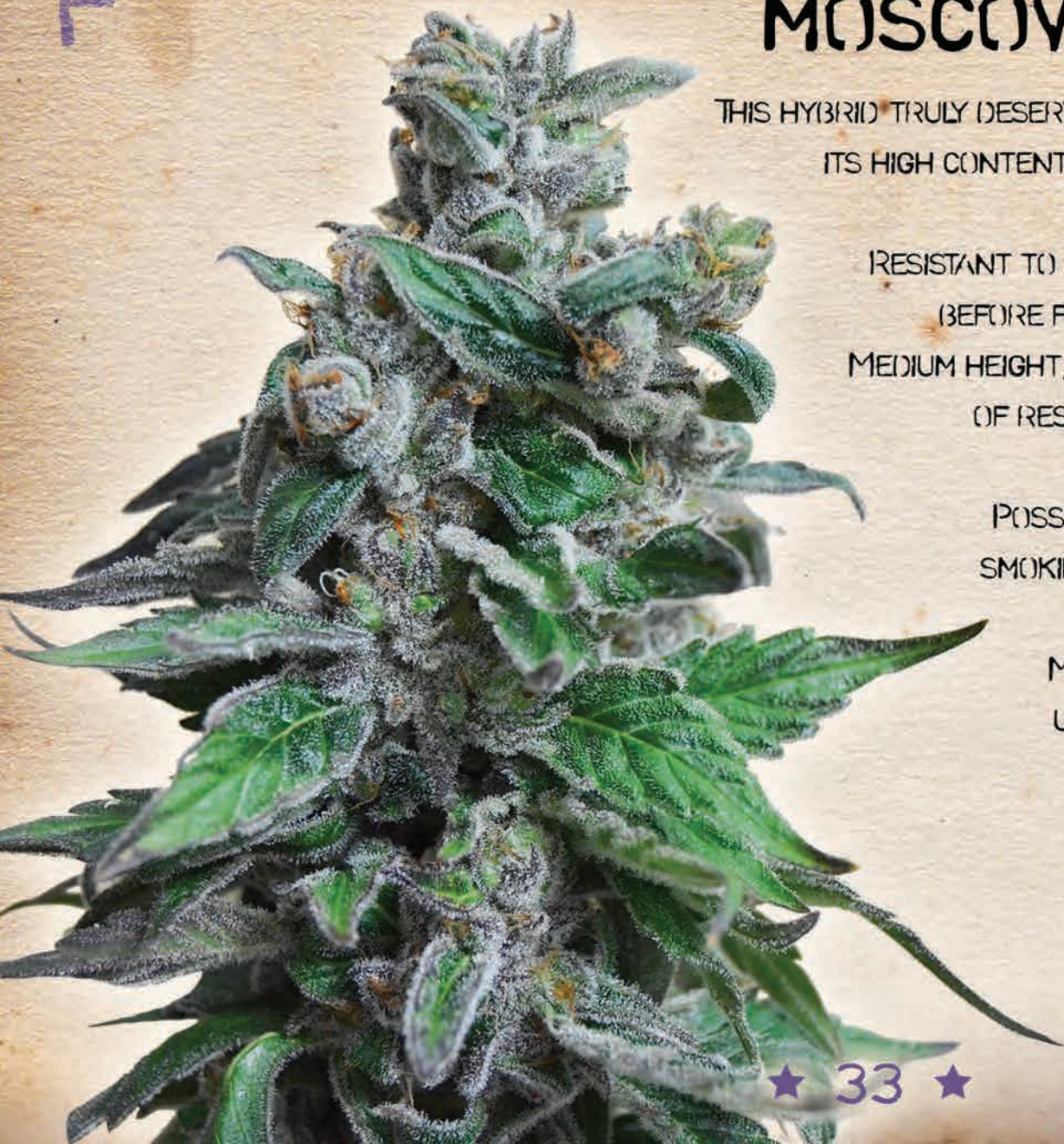
RESISTANT TO COLD WEATHER. RECOMMENDED TO HARVEST BEFORE FROSTY DAYS (IF CLIMATE CONDITIONS ALLOW).

MEDIUM HEIGHT, COMPACT BUDS, COVERED WITH THICK LAYERS OF RESIN. TURNS DARK-PURPLE BY THE END OF THE FLOWERING.

POSSESSES SWEET FOREST BERRIES SCENT, WHILE SMOKING TRANSFORMS INTO SOFT OVERWHELMING CHERRY AROMA.

MOSCOW BLUEBERRY IS IDEAL FOR MEDICINAL USE, TREATING DEPRESSION, CHRONIC FATIGUE, STRESS, MUSCLE PAIN.

VERY POSITIVE AND RELAXING EFFECT.



Handwritten signature: A/ESH

BLUEBERRY X SECRET HYBRID X AK-47

SATIVA 50%, INDICA 50%

THC: 18% / CBD: 5% / HEIGHT: 80-100 CM / FLOWERING: 55-65 DAYS

INDOOR: 450-550 G/M² / OUTDOOR: 900-1300 G/PLANT



F

POWER RUSSIAN

A UNIQUE AFRICAN SATIVA AND THE GLORIFIED DUTCH HYBRID HAVE GIVEN POWER RUSSIAN ITS INCREDIBLE POWER, EFFECT AND YIELD.

HUGE, CRYSTAL-STREWN BUDS NEED SUPPORT. THE VARIETY IS

RECOMMENDED FOR CULTIVATION USING THE SCROG

METHOD. SATIVA WITH HIGH YIELDS IS A PERFECT FIND

FOR ANY GROWER. THE PLANT BEHAVES PARTICULARLY WELL

OUTDOORS, VERY QUICKLY TURNING INTO A GIANT TREE.

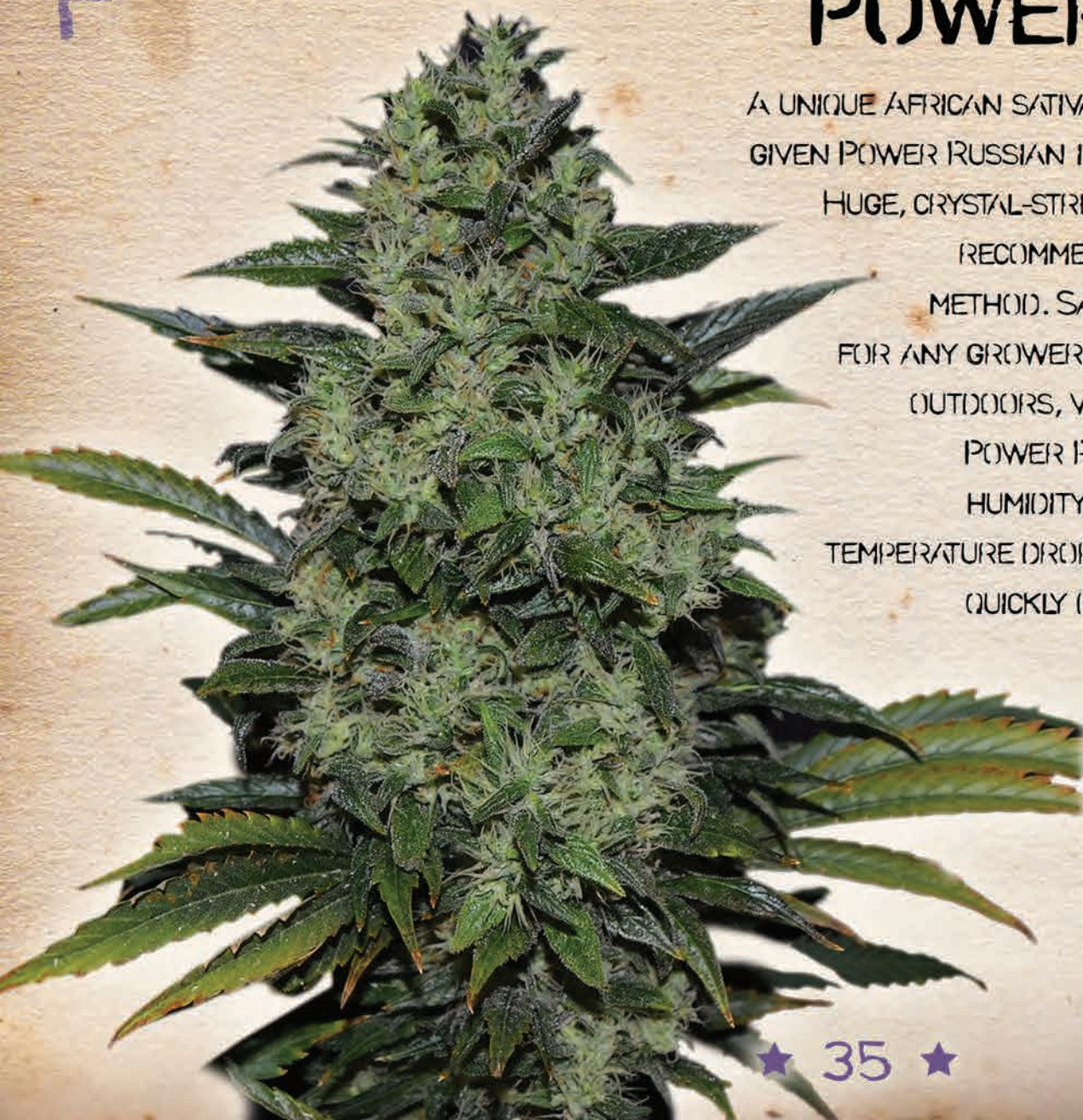
POWER RUSSIAN IS EXTREMELY RESISTANT TO HIGH

HUMIDITY, FUNGAL DISEASES, PESTS AND A STRONG

TEMPERATURE DROP. THIS IS AN OUTDOOR VARIETY THAT WILL

QUICKLY BECOME THE NUMBER ONE IN YOUR LIST OF

FAVORITES!



SOUTH AFRICAN X WHITE RUSSIAN

SATIVA 70%, INDICA 30%

THC: 22% / HEIGHT: 110-150 CM / FLOWERING: 65-70 DAYS

INDOOR: 500-600 G/M² / OUTDOOR: 1000-1800 G/PLANT



F

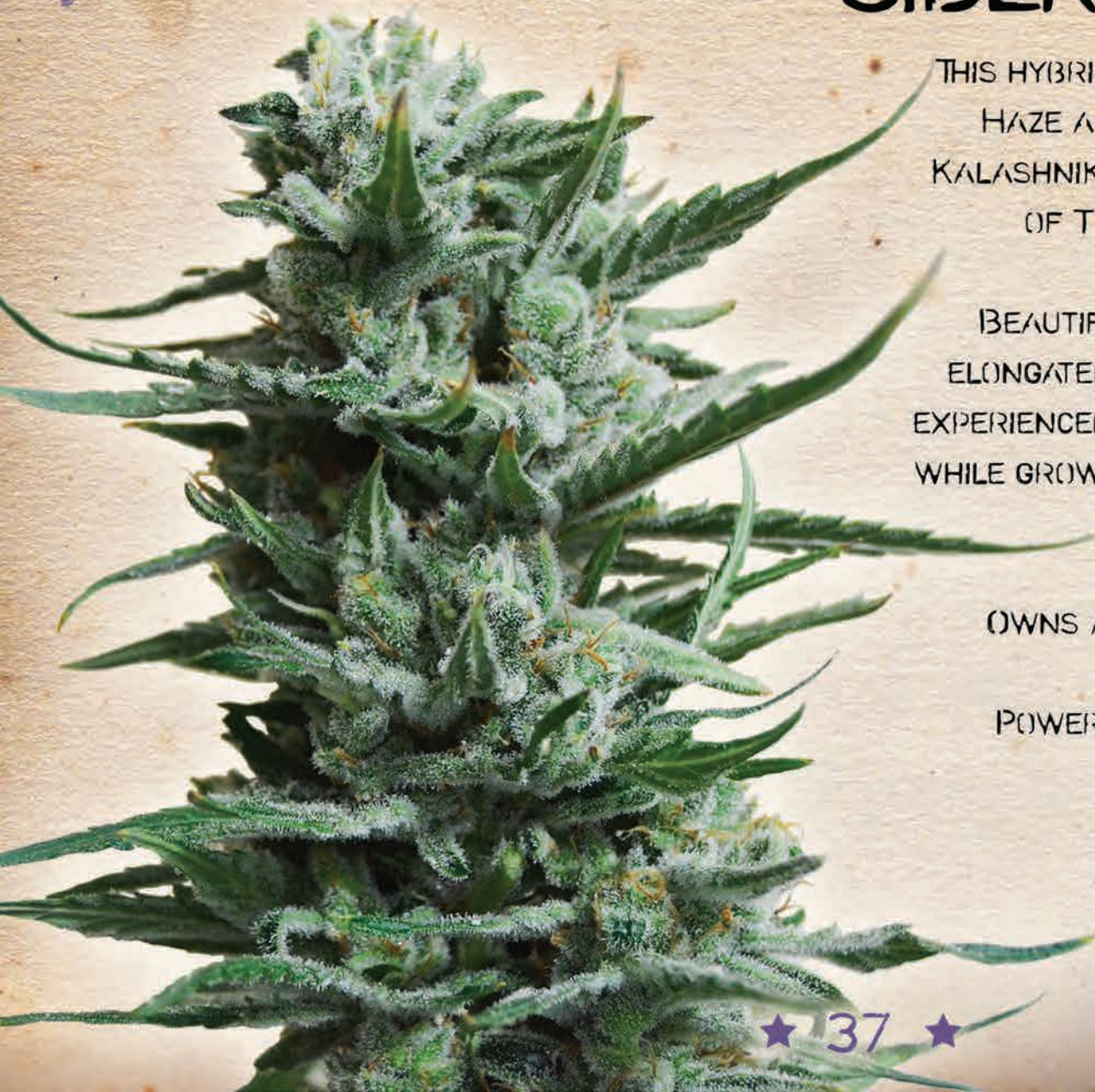
SIBERIAN HAZE

THIS HYBRID IS THE RESULT OF CROSSING AK-47, HAZE AND AMNESIA. ONE OF THE STRONGEST KALASHNIKOV SEEDS STRAINS, CONTAINING 22% OF THC. SHORT FLOWERING PERIOD FOR A SATIVA-DOMINANT PLANT.

BEAUTIFUL AND TALL WITH DARK LEAVES AND ELONGATED FOX-TALE BUDS. RECOMMENDED FOR EXPERIENCED GROWERS, DEMANDING EXTRA CARE WHILE GROWING (MANICURING, SUPPORTING HEAVY BUDS). SCROG METHOD GIVES BEST RESULTS INDOORS.

OWNS A VERY STRONG SMELL WITH HINTS OF HAZE.

POWERFUL SATIVA HIGH IS IDEAL FOR ACTIVE WORK AND SOCIALIZING.



Handwritten signature: Fresh

AK-47 X HAZE X AMNESIA

SATIVA 65%, INDICA 35%

THC: 22% / HEIGHT: 90-120 CM / FLOWERING: 65-75 DAYS

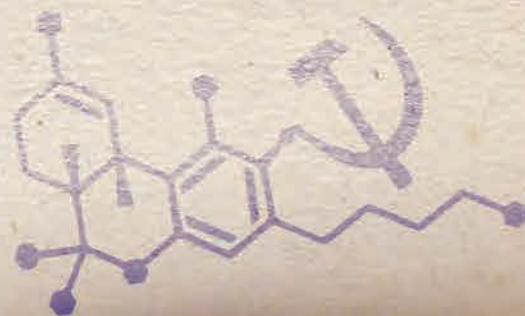
INDOOR: 450-550 G/M² / OUTDOOR: 750-1200 G/PLANT



F

VOIDKA LEMON

ONE OF THE MOST UNUSUAL VARIETIES OF KALASHNIKOV SEEDS. STRENGTHENING THE ALREADY POWERFUL AMNESIA MOLOTOV WITH SUN-BAKED AFGHAN GENES, WE RECEIVED A REAL TIME BOMB. WITHOUT ANY JOKES AND EXAGGERATION, THIS STRAIN IS A TOTAL HIT WITH A GREAT FUTURE. SATIVA, WHICH BEHAVES AS AN INDICA. GROWING UP TO ALMOST A METER AND A HALF INDOORS, THE PLANT BUILDS UP HEAVY WITH COMPACT COLAS. A SHARP LEMON FLAVOR IS COMPARABLE TO A SIP OF ICE VODKA LEMON. THE SMOKE IS THICK AND DENSE, AND THE EFFECT IS EXTREMELY PSYCHEDELIC, FILLING YOUR WHOLE DAY WITH ACTIVE AND ENERGETIC VIBE.

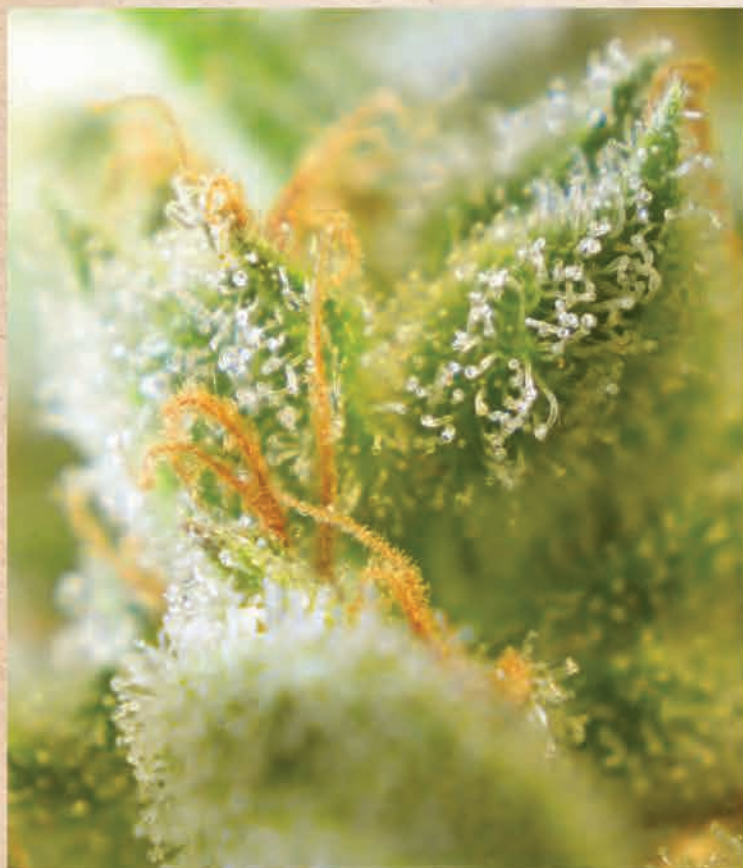


AFGHANISTAN X AMNESIA MOLOTOV

SATIVA 60%, INDICA 40%

THC: 23% / HEIGHT: 100-140 CM / FLOWERING: 60-65 DAYS

INDOOR: 500-550 G/M² / OUTDOOR: 900-1300 G/PLANT



★ 40 ★

WHITE RUSSIAN OG

A POWERFUL PLANT WITH DENSE CONES IS A FRUIT OF CROSSING TWO FAMOUS GENETICS. WHITE RUSSIAN OG BUDS ARE SPRINKLED WITH SNOW-WHITE TRICHOMES, RESEMBLING THE SNOW-COVERED LANDSCAPES OF THE RUSSIAN OUTBACK. PERFECT FOR HASHISH AND CONCENTRATES. HARDY AND RELIABLE, WHITE RUSSIAN OG GIVES EXCELLENT HARVESTING RESULTS IN BOTH THE GREENHOUSE AND OUTDOORS. A COMPLEX AROMA OF BARK, FOREST GREENERY, PINE NEEDLES WITH SLIGHT HINTS OF MELON AND SOUR PASSION FRUIT. POSSESSING AN IMPRESSIVE CONTENT OF THC, WHITE RUSSIAN OG GIVES AN UNFORGETTABLE CEREBRAL AND BODY EFFECT, THEREFORE IT IS QUITE NECESSARY TO CONSUME IT VERY CAREFULLY.

OG KUSH X WHITE RUSSIAN

SATIVA 30%, INDICA 70%

THC: 23% / HEIGHT: 100-120 CM / FLOWERING: 55-65 DAYS

INDOOR: 500-600 G/M² / OUTDOOR: 900-1500 G/PLANT



F

WHITE WIDOW 47

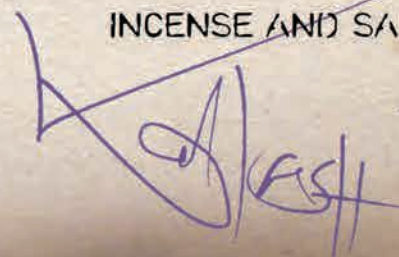
THE RESULT OF CROSSING A VERY SPECIAL STRAIN FROM TAJIKISTAN
AND CLASSIC WHITE WIDOW WITH AK-47.

THIS STRAIN IS REMARKABLE FOR ITS SHORT FLOWERING
PERIOD OF 55 TO 60 DAYS. VERY UNDEMANDING AND
POWERFUL PLANT THAT GIVES EXCELLENT RESULTS IN BOTH
OUTDOOR, GREENHOUSE AND INDOOR CULTIVATION.

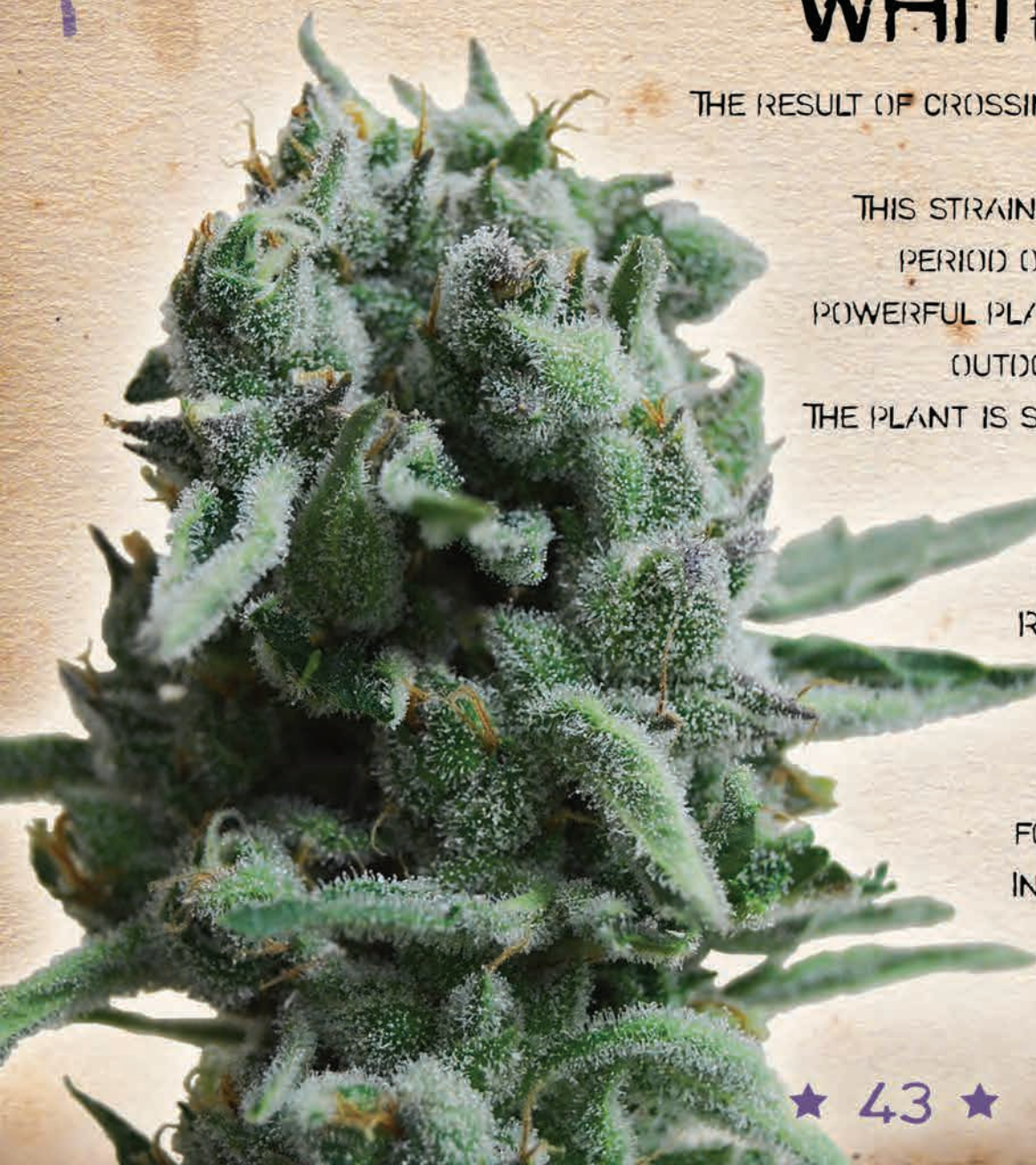
THE PLANT IS SPHERE-SHAPED WITH MEDIUM SIZE (100-130
CM INDOORS AND 130-150 CM
OUTDOORS). IDEAL BOTH FOR

(BEGINNERS AND EXPERIENCED GROWERS.
ROUNDED COMPACT BUDS COVERED WITH THICK
WHITE RESIN, TYPICAL FOR WHITE WIDOW
STRAINS.

EFFECT IS CEREBRAL, RELAXING, AND IDEAL
FOR RECREATION. THANKS TO UNIQUE TADZHIK
INDICA ITS SMELL RESEMBLES SWEET EASTERN
INCENSE AND SANDAL WOOD.



★ 43 ★



TAJIKH INDICA X WHITE WIDOW X AK-47

SATIVA 30%, INDICA 70%

THC: 19% / HEIGHT: 100-130 CM / FLOWERING: 50-55 DAYS

INDOOR: 450-550 G/M² / OUTDOOR: 1000-1700 G/PLANT



E

AK KUSH EXPRESS

THIS IS A FAST VERSION OF OUR BEST INDICA STRAINS, RECEIVED BY CROSSING AK-KUSH WITH SECRET HYBRID THAT SHORTENS FLOWERING PERIOD. SAME AS ORIGINAL AK-KUSH, IS EASY TO GROW, RESISTANT TO FUNGAL DISEASES, DOESN'T NEED MANICURING AND IDEAL FOR BEGINNERS. EXCELLENT FOR OUTDOORS AND INDOORS, GIVING UP TO 600 GRAMS PER SQ.M. EFFECTS FROM CONSUMING AK-KUSH IS MORE MEDICINAL, CONTAINING NEW CBD GENETICS. TASTE IS SIMILAR TO ORIGINAL AK-KUSH WITH MORE DISTINCTIVE CITRUS AROMA.



AK KUSH

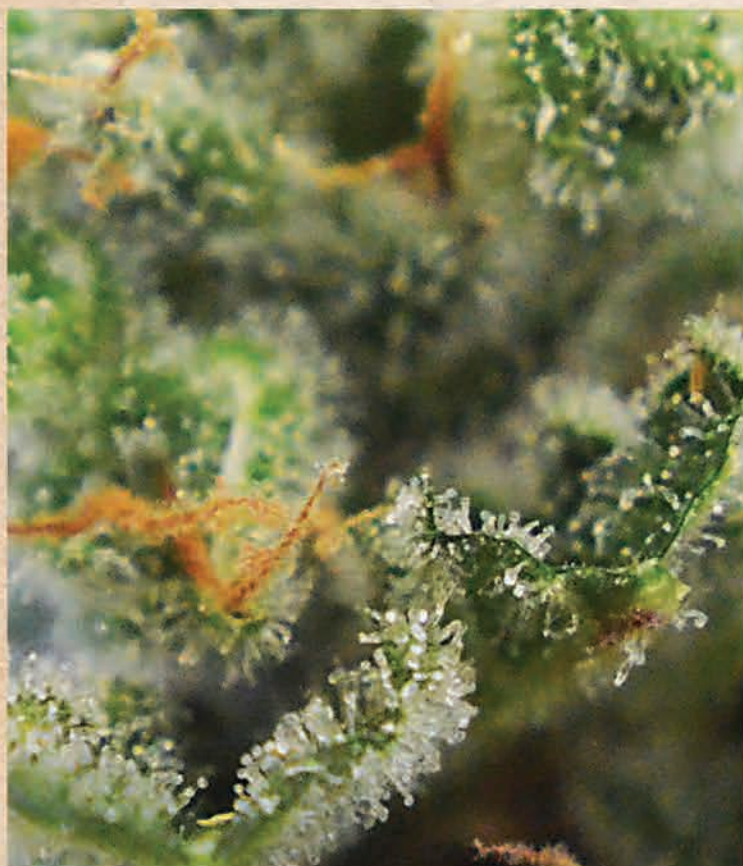
★ 45 ★

AK-KUSH X SECRET HYBRID

SATIVA 15%, INDICA 85%

THC: 20% / HEIGHT: 80-100 CM / FLOWERING: 45-55 DAYS

INDOOR: 450-550 G/M² / OUTDOOR: 900-1200 G/PLANT

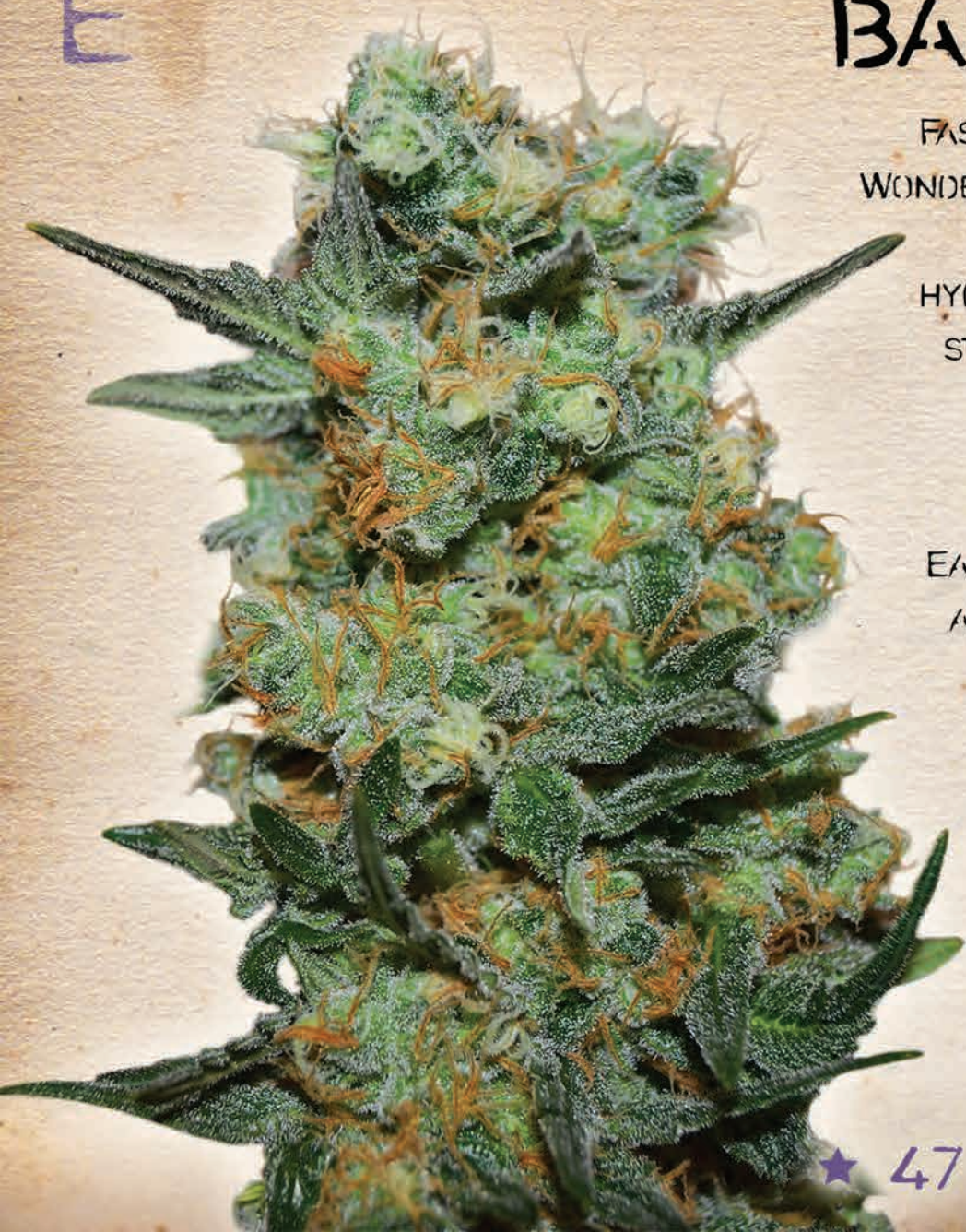


E

BAIKAL EXPRESS

FAST VERSION OF KUBANSKIY UBIYZA (KUBAN KILLER).
WONDERFUL EXPRESS STRAIN WAS CREATED BY CROSSING
OUR FAVORITE KUBANSKIY UBIYZA AND A SECRET
HYBRID WITH THE SHORTEN FLOWERING PERIOD. VERY
STRONG AND UNDEMANDING, RESISTANT TO HOT AND
DRY WEATHER. GROWS FASTER DUE TO ITS INDICA
CONTENT.

POWERFUL UBIYZA EFFECT IS INTENSIFIED BY FAR
EAST GENETICS, BUT, NEVERTHELESS, LETS YOU WORK
AND CONCENTRATE. THE SMOKE OF BAIKAL EXPRESS
WITH LEMONY SCENT REMINDS OF KUBANSKIY
UBIYZA, WITH SWEET HINTS, GIVING IT NEW TASTE
GRADATION AND MAKING IT TRULY UNIQUE.



★ 47 ★

A stylized, handwritten signature or logo in purple ink. It features a large, sweeping 'X' or 'A' shape on the left, followed by a series of loops and a final vertical stroke on the right, resembling a signature.

KUBANSKIY UBIYZA X SECRET HYBRID

SATIVA 70%, INDICA 30%

THC: 22% / HEIGHT: 100-130 CM / FLOWERING: 45-55 DAYS

INDOOR: 500-600 G/M² / OUTDOOR: 1000-1200 G/PLANT



E

BIG ALTAI SATIVA EXPRESS

THE ALTAI TERRITORY IS NOT ONLY THE WARMEST PART OF SIBERIA, BUT ALSO THE BIRTHPLACE OF UNIQUE, AUTHENTIC VARIETIES, "GOLDEN MINE" OF PHENOTYPES UNKNOWN TO THE CIVILIZED WORLD. SHORT, BUT GENEROUS IN THE SUN SUMMER FORCES PLANTS TO BLOOM AND BUILD UP MAS MUCH FASTER. A POWERFUL AFRICAN GENE, ADOPTED ON ALTAIC GENETICS, IS RESPONSIBLE FOR A COLORFUL PSYCHEDELIC DRIVE, WHICH IS SO PREFERABLE WITH SATIVA LOVERS. THE COMBINATION OF TWO EXCEPTIONAL VARIETIES WITH THE ADDITION OF A SECRET HYBRID MADE BIG ALTAI SATIVA EXPRESS A TRULY UNIQUE PLANT. THE EFFECT IS CLEAN AND POWERFUL, CHARGING YOU WITH VIGOR AND ENERGY FOR A LONG PERIOD. THE TASTE OF PINE NUTS AND FOREST FRESHNESS.



ALTAI X AFRICAN SATIVA X SECRET HYBRID

SATIVA 90%, INDICA 10%

THC: 22% / HEIGHT: 100-140 CM / FLOWERING: 70-75 DAYS

INDOORS: 500-600 G/M² / OUTDOORS: 900-1300 G/PLANT



★ 50 ★

E

KABUL EXPRESS

THIS IS A FAST VERSION FOR TRUE INDICA LOVERS. THE SEEDS WERE BROUGHT FROM KABUL BACK IN 1989. OVER THE YEARS, IT HAS BEEN GROWN IN THE TERRITORY OF KAZAKHSTAN, RUSSIA AND UKRAINE, BUT DUE TO THE CHAOTIC CROSSINGS AND INBREEDING, ITS ORIGINAL QUALITY HAS GONE INTO OBLIVION. ONLY SEVEN SEEDS WERE LEFT FROM INITIALLY IMPORTED, THAT HAD BEEN KEPT INTACT FOR OVER TWENTY YEARS! DESPITE THE PESSIMISM OF OUR "PARTNERS", ALL OF THE SEEDS SPROUTED. MOREOVER, WE WERE ABLE TO RECREATE AND STABILIZE DESIRED PHENOTYPE.

THE TWO-YEAR WORK GAVE EXCELLENT RESULTS! "OLD-SCHOOLERS" WHO REMEMBER THAT CLASSIC TASTE, RECOGNIZE IT AT THE FIRST PUFF - THIS IS TRUE OLD SCHOOL AFGHAN.

UNDEMANDING PLANT PRACTICALLY DOES NOT NEED MANICURING. IT HAS THICK DARK FLOWERS. AT THE END OF THE FLOWERING, ITS SCENT REMINDS THE AFGHAN HASHISH.

SWEET FRUITY TASTE. VERY STRONG INDICA EFFECT. EXCELLENT CHOICE FOR PEOPLE SUFFERING FROM INSOMNIA.

AFGHAN X SECRET HYBRID

SATIVA 15%, INDICA 85%

THC: 22% / HEIGHT: 90-110 CM / FLOWERING: 48-55 DAYS

INDOOR: 500-600 G/M² / OUTDOOR: 900-1300 G/PLANT



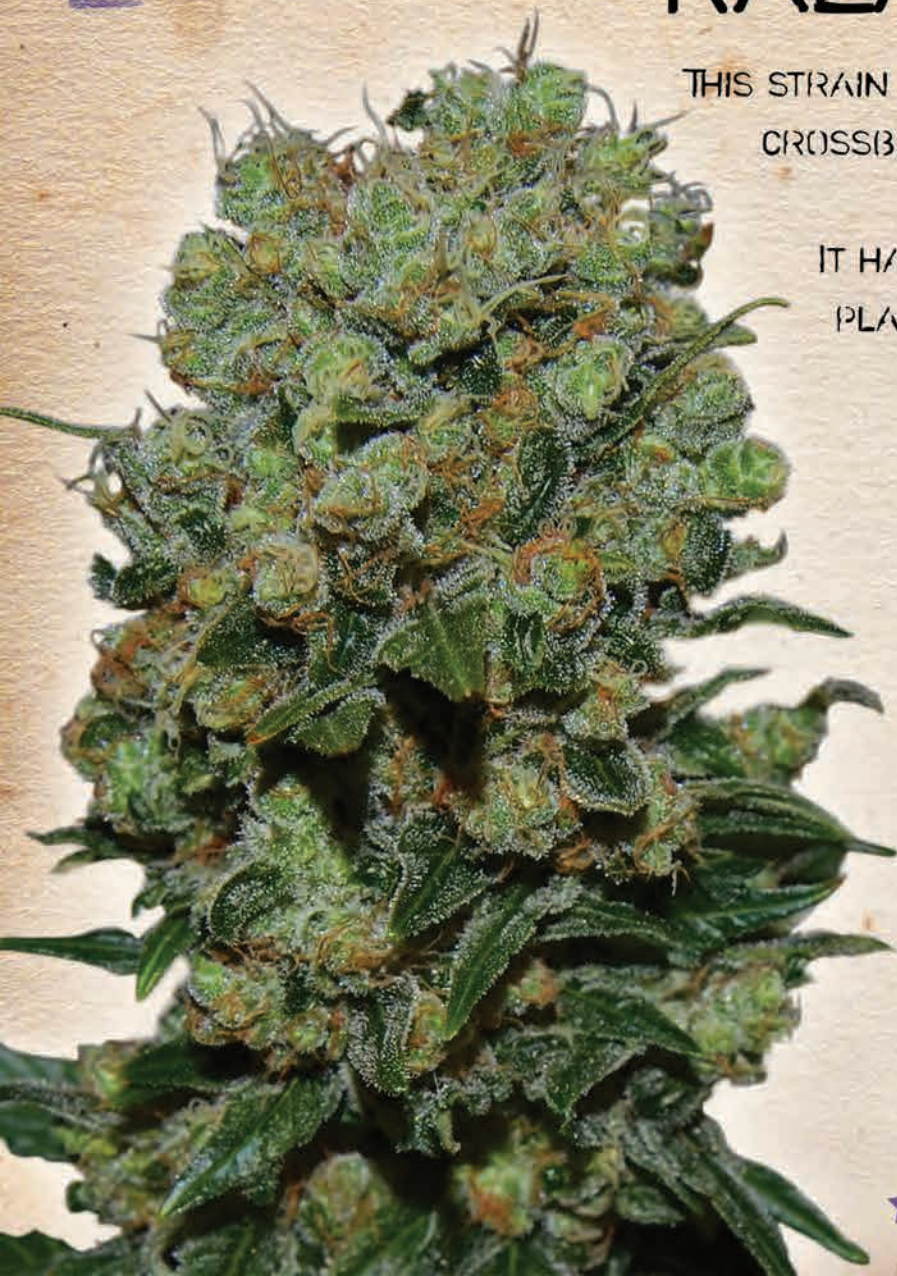
E

KALASHNIKOV EXPRESS

THIS STRAIN WAS BASED ON THE OLD RELIABLE KALASHNIKOV ORIGINAL,
CROSSBRED WITH GENETICS THAT FASTEN THE FLOWERING AND BUD
DEVELOPING PROCESS.

IT HAS HIGHER INDICA PHENOTYPE PERCENTAGE, THEREFORE THE
PLANTS ARE SHORTER AND SQUATTY, CARRYING MASSIVE BUDS.

ITS DISTINCTIVE FEATURE IS THAT WHILE RETAINING
ORGANOLEPTIC QUALITIES OF ITS PREDECESSOR IT ALSO
GAINED SOUR STRAWBERRY SCENT.



KALASHNIKOV (ORIGINAL X SECRET HYBRID)

SATIVA 50%, INDICA 50%

THC: 18% / HEIGHT: 90-120 CM / FLOWERING: 45-55 DAYS

INDOOR: 700-800 G/M² / OUTDOOR: 1000-1300 G/PLANT

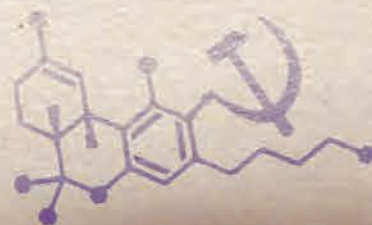


E

PURPLE RUSSIAN EXPRESS

THE PLANT WITH A VERY COMPACT STRUCTURE AND A BEAUTIFUL PURPLE HUE, PERFECTLY COMPLEMENTING THE ABUNDANCE OF SNOW-WHITE TRICHOMES ON DENSE BUDS. WITH PROPER CULTIVATION PURPLE RUSSIAN EXPRESS WILL BE A DECORATION OF ANY GROW-ROOM. GROWERS WILL BE PLEASANTLY SURPRISED BY THE AMOUNT OF THE HARVEST AND THE UNIQUE TASTE. A POWERFUL EFFECT IMMEDIATELY FELT BY THE MIND AND BODY. PURPLE RUSSIAN EXPRESS IS PERFECT FOR EASING PAIN AND STRESS, IT COULD HELP FIGHT INSOMNIA, LOSS OF APPETITE AND MUSCLE SPASMS. PERFECT COMBINATION OF COLOR, TASTE AND THC CONTENT CONSISTENCY.

★ 55 ★



BIG DADDY PURPLE X WHITE RUSSIAN X SECRET HYBRID

SATIVA 20%, INDICA 80%

THC: 21% / HEIGHT: 90-130 CM / FLOWERING: 50-55 DAYS

INDOOR: 500-600 G/M² / OUTDOOR: 800-1200 G/PLANT



E

SOYUZ OG EXPRESS

SOYUZ OG EXPRESS IS AN EXCEPTIONALLY POSITIVE MIX OF THE WEST AND THE EAST. THE BEST THAT TWO CIVILIZATIONS CAN OFFER FROM DIFFERENT SIDES OF THE OCEAN. JUST AS AN INTERNATIONAL SPACE STATION UNITES NATIONS IN THE EXPLORATION OF OUTER SPACE, THIS UNIQUE VARIETY COMBINES CALIFORNIAN FLAVOR AND RESINITY WITH NORTHERN ENDURANCE AND PRODUCTIVITY. A PERFECT MIXTURE OF INDICA AND SATIVA HAS A POWERFUL ANTI-STRESS EFFECT. EARTHEN, PINE AND TRULY STUNNING CITRUS AROMAS ARE GUARANTEED TO BE LIKED BY CONNOISSEURS OF BEAUTY. PREPARE TO LAUNCH YOURSELF IN THE VAST EXPANSES OF THE UNIVERSE WITH THE FIRST PUFF OF SOYUZ OG EXPRESS!



Handwritten signature in purple ink, possibly reading 'J. Est'.

OG KUSH X BAIKAL EXPRESS X SECRET HYBRID

SATIVA 40%, INDICA 60%

THC: 21% / HEIGHT: 90-130 CM / FLOWERING: 50-55 DAYS

INDOOR: 450-550 G/M² / OUTDOOR: 800-1000 G/PLANT



E

WHITE CRITICAL EXPRESS

W.C.E. - OUR NEW EXPRESS FOR CLASSICS LOVERS. VERY "FAST",
COMPACT PLANT WITH LARGE BUDS.

DOMINATING AROMA REMINDS OF CRITICAL, BUT THE AMOUNT OF
RESIN CLEARLY STATES WIDOW'S INVOLVEMENT.

IT WOULD BE BEST PLANTING ALL THE VARIETIES OF EXPRESS
TESTED IN THE KRASNODAR REGION, SOUTHERN UKRAINE AND
SPAIN, IN MID-JULY. GROWTH PROCESS ACCELERATES DUE TO
ITS "SECRET HYBRID " GENES, AND IT IS QUITE POSSIBLE TO GET

A WONDERFUL RESULT BY THE MIDDLE OF OCTOBER. OUR
EXPRESS LINE ALLOWS YOU TO SAVE A COUPLE OF MONTHS
AT THE INITIAL STAGE OF WORK.

ANY CANNABIS CONNOISSEUR WILL ENJOY (BALANCED
SATIVA-INDICA EFFECT OF THIS PLANT. WE RECOMMEND
USING SCROG METHOD), WHILE GROWING THIS VARIETY,
(DUE TO ITS BIG AND HEAVY BUDS.



WHITE WIDOW X CRITICAL MASS X SECRET HYBRID
SATIVA 30%, INDICA 70%



THC: 21% / HEIGHT: 80-120 cm / FLOWERING: 45-48 DAYS
INDOOR: 450-600 G/M² / OUTDOOR: 600-900 G/PLANT



★ 60 ★

